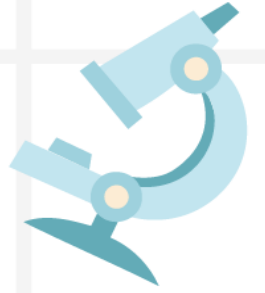
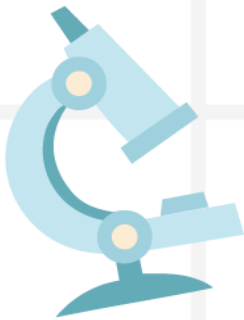


classover

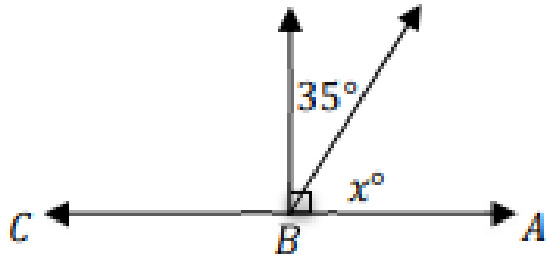


Daily Pratice

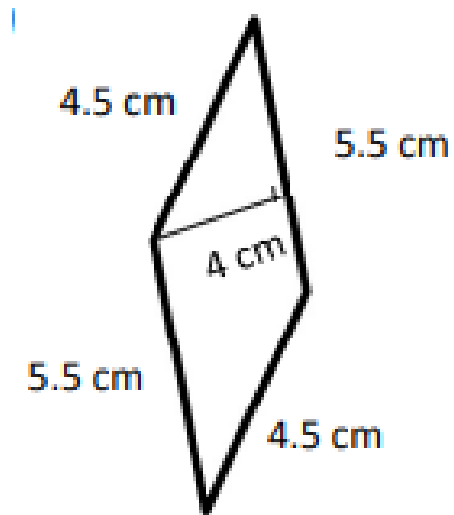


G6-B-1 Homework

1. What is the value of x in the following figures?



2. Find the perimeter of the shape.



3. Simplify the following:

a. $\frac{5^{14}}{5^8} =$

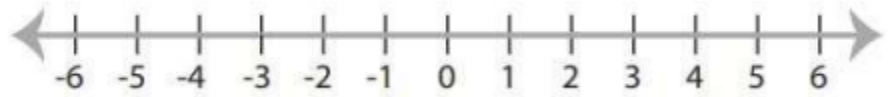
b. $\frac{6^5}{6^8} =$

c. $\frac{9^7}{9^{19}} =$

4. Solve the inequality and graph it.

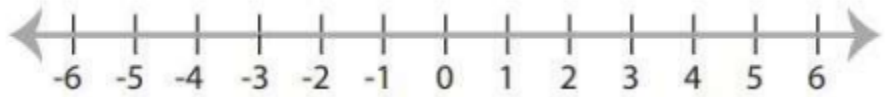
a.

$$4 + x \leq 5$$



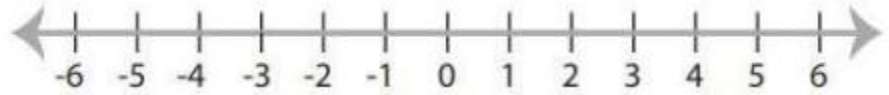
b.

$$4x \geq 16$$



c.

$$x - 1 \leq 2$$



5. Evaluate the expression using the value given.

a. $15x + 8 - 6x$, $x=2$

b. $3x+9$, $x=3$

c. $x+(-2)$, $x= -4$

6. Solve the word problem.

a. Jason has 6 red cards and 24 green cards. What is the ratio of Jason's red cards and green cards?

b. In David's class, 18 of the students are short and 10 are tall. In Mike's class 24 students are tall and 12 students are short. Which class has a higher ratio of tall to short students?